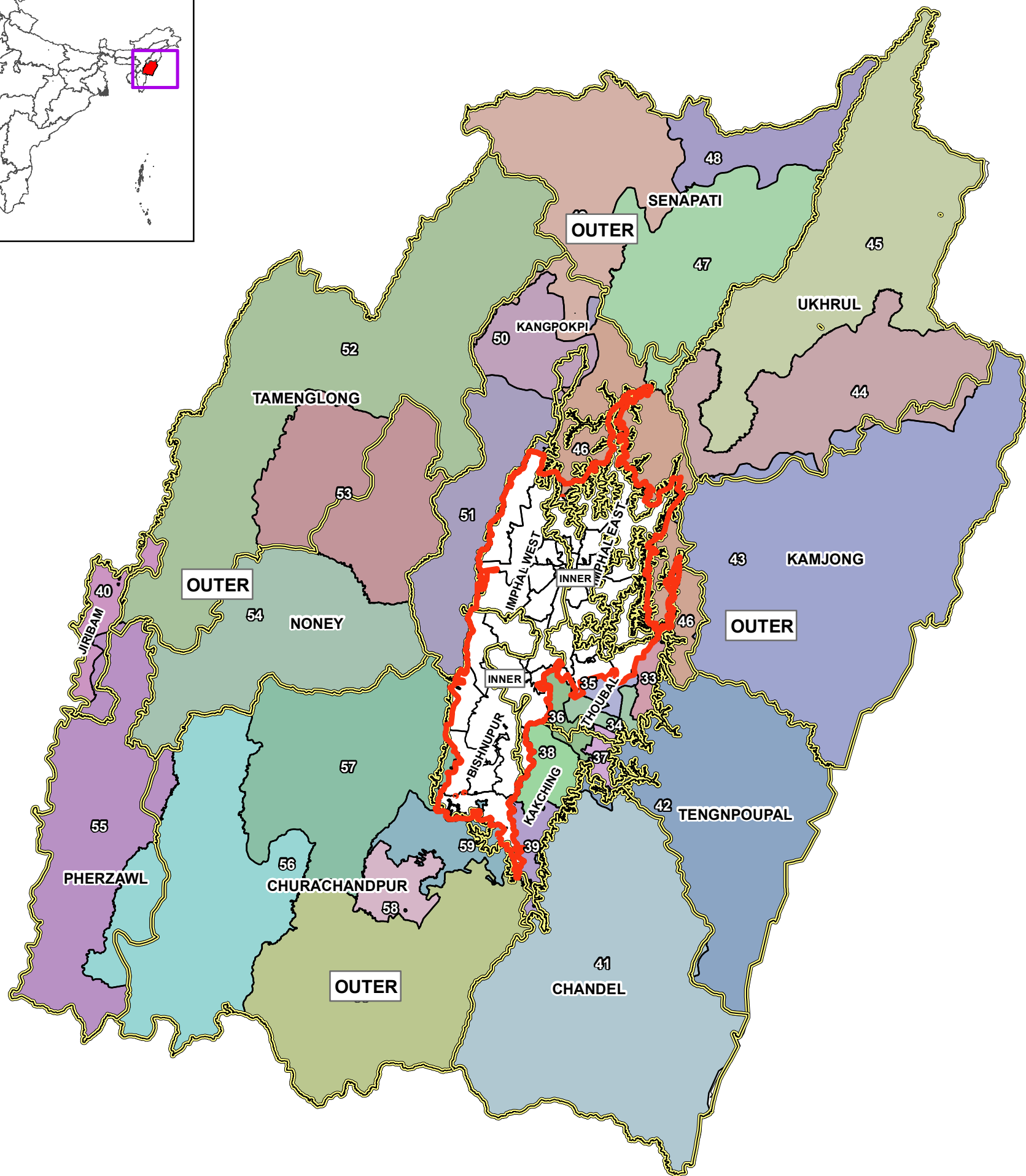




MAP INDICATING ASSEMBLY & PARLIAMENTARY CONSTITUENCIES OF MANIPUR

Outer ACs

- | | |
|---------------|------------------|
| 33-Heirok | 47-Karong |
| 34-Wangjing | 48-Mao |
| 35-Khangabok | 49-Tadubi |
| 36-Wabagai | 50-Kangpokpi |
| 37-Kakching | 51-Saitu |
| 38-Hiyanglam | 52-Tamei |
| 39-Sugnu | 53-Tamenglong |
| 40-Jiribam | 54-Nungba |
| 41-Chandel | 55-Tipaimukh |
| 42-Tengnoupal | 56-Thanlon |
| 43-Phungyar | 57-Henglep |
| 44-Ukhrul | 58-Churachandpur |
| 45-Chingai | 59-Saikot |
| 46-Saikul | 60-Singhat |



No of Assembly Constituencies = 60

No of Parliamentary Constituencies

2 (Inner PC (AC 1 to 32)

& Outer PC(AC 33 to 60)

Legend

- Parliamentary Constituency Boundary
- AC Boundary
- District Boundary

